

# DKG-210

## UNIVERSAL INTERNET GATEWAY AC & DC SUPPLY VERSIONS

The intelligent DKG-210 module connects any industrial device to the Rainbow Scada remote monitoring and control system, through internet. It supports both Ethernet and GPRS connections.



### DESCRIPTION

The DKG-210 is designed for internet monitoring and control of industrial devices using different protocols through the RAINBOW SCADA monitoring system

The DKG-210 does not require any static or real IP number or any port redirection. It is a simple “**plug & play**” unit working on any internet enabled connection.

The RAINBOW SCADA system is informative (rather being query based), thus data traffic is reduced and data security enforced.

The slave device Modbus map is held by the central server and automatically downloaded to the DKG-210 when needed, thus no firmware upgrade is required to add new device types to the monitoring system.

Data ports available for device polling include dual RS-485, RS-232 and USB. The unit supports up to 32 devices on each RS-485 port. Adding RS-232 and USB ports, a maximum of 66 devices may be polled with one DKG-210 unit

Supported protocols include, but not limited to MODBUS-RTU, IEC62056 and Datakom-Rainbow communication.

The DKG-210 unit features 2 relay outputs for remote control and 2 digital inputs for remote sensing.

### FEATURES

- **Plug & play IP system, easy installation**
- **Provides data security with dynamic IP**
- **AC and DC supply types available**
- **Free PC configuration software**
- **Internal GPRS modem with magnetic antenna**
- **Ethernet and GPRS connection support**
- **Dual RS-485 ports**
- **RS-232 port**
- **USB Host port**
- **2 x Digital inputs**
- **2 x Relay Outputs**
- **GPRS can back-up the Ethernet**
- **DIN rail mounted**

### COMMUNICATION PORTS

**Ethernet port (10/100Mb)**

**Internal GPRS modem (optional)**

**Dual RS-485 ports, adjustable speed**

**RS-232, adjustable baud rate**

**USB Host 2.0**

**USB Device 2.0**





## TECHNICAL SPECIFICATIONS

### Power Supply:

**DC Supply Models:** 8.0 to 36.0 V-DC.

**AC Supply Models:** 170 to 270 V-AC. 50/60Hz

**Power consumption:** 5W / 5VA max.

**Digital inputs:** 6 to 150 V-DC (4 to 270 V-AC).

**Relay outputs:** 5Amps @ 250V

**Ethernet Port:** 10/100 Mbits

**USB Device:** USB 2.0 Full speed

**USB Host:** USB 2.0 Full speed

**RS-485 Ports:** 1200-115200baud

**RS-232 Port:** 1200-115200baud

**Operating temperature:**

-20°C to 70°C (-4 to +158 °F)

**Storage temperature:**

-40°C to 80°C (-40 to +176°F)

**Maximum humidity:** 95% non-condensing.

**Dimensions:** 70 x 115 x 66mm (WxHxD)

**Weight:** 400g max.

**Installation:** DIN Rail mounted

**Case Material:**

High Temperature, non-flammable ABS/PC

**EU Directives Conformity**

-2006/95/EC (low voltage)

-2004/108/EC (electro-magnetic compatibility)

**Norms of reference:**

EN 61010 (safety requirements)

EN 61326 (EMC requirements)

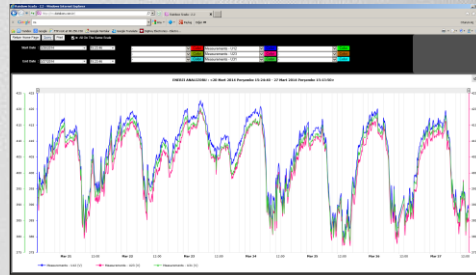
## RAINBOW SCADA PROGRAM

The Rainbow Scada server allows monitoring of large numbers of endpoints through internet using a web browser. Remote monitoring, control and data analysis are provided.



Slave Values (RS-485/232/RS485)

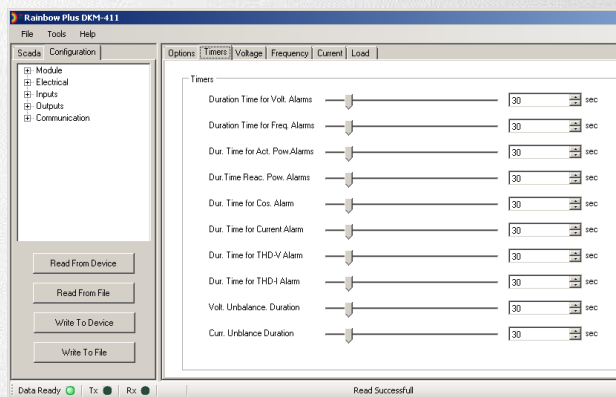
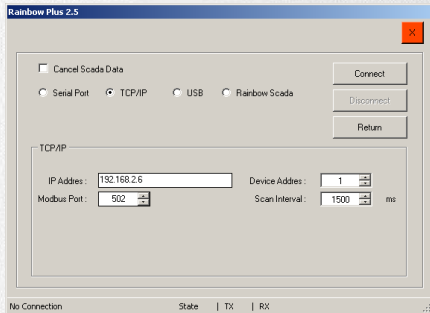
Date	% Ind	% Cap	kW	kVar_Ind	kVar_Cap
01/2014	199.8	95.6	842.220	1682.480	804.789
02/2014	0.0	0.0	717.228	0.000	0.000
03/2014	NaN	NaN	0.000	0.000	0.000
12/2013	NaN	NaN	0.000	0.000	0.000



## RAINBOW PLUS PROGRAM

The Rainbow Plus configuration program is free of charge and allows parameter setting, storing to PC and restoring to the unit.

The program connects through USB or ethernet port.



## TYPICAL CONNECTIONS

